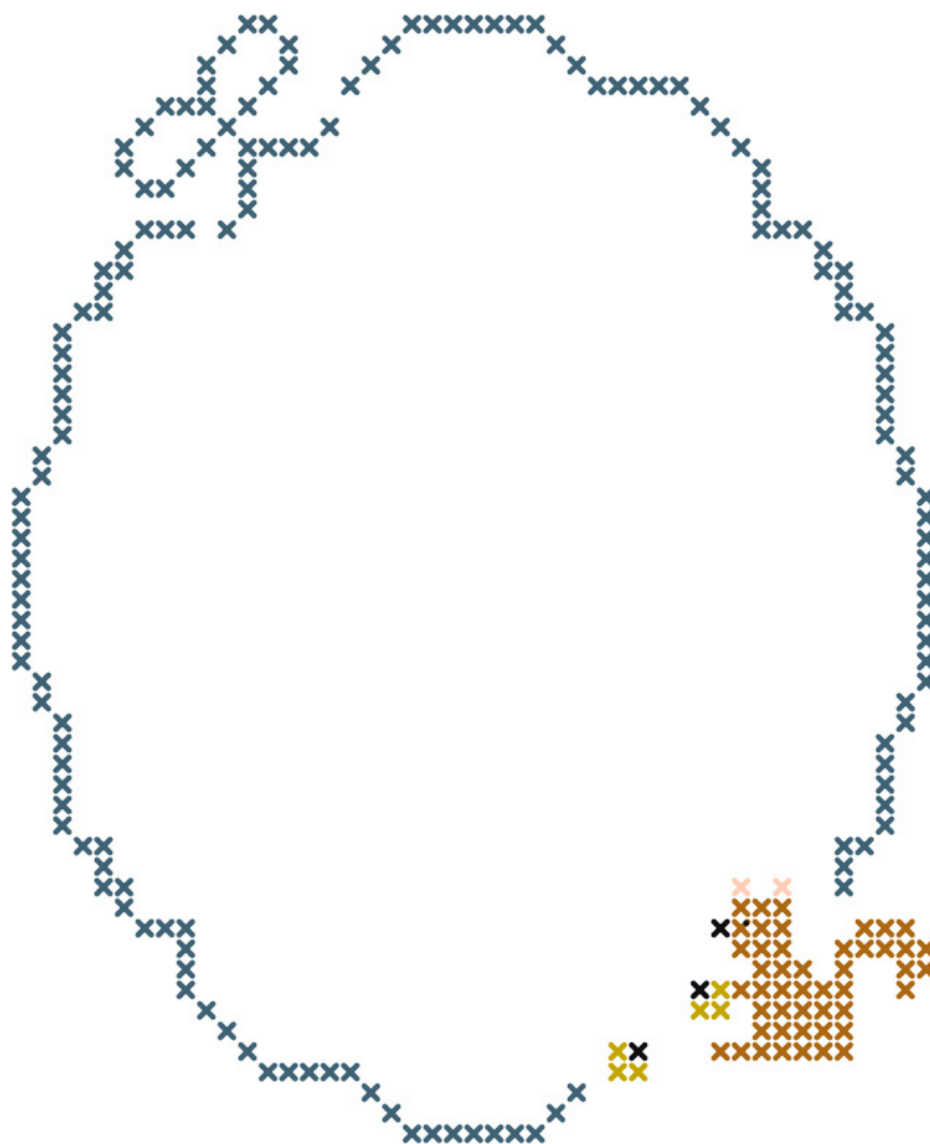


HAPPY  
STITCHING  
with Hazel & Hoot



## Squirrel Frame

## Counted cross stitch

So why on earth is counted cross stitch called counted cross stitch? When you look at your cross stitch chart you will notice that there are a lot of little squares that form the pattern. You will be matching the squares on the chart to the holes/threads of the chosen fabric. This means you need to count the squares on the chart as well as the holes/threads on your fabric. You'll also primarily use stitches made of crosses or Xs. So, counted cross stitch!

### Fabric:

We recommend using either an aida fabric (this is the option you might want to choose if you are a newbie to cross stitching) or an evenweave linen. Both options are so-called "evenweave" fabrics. Aida is woven with blocks of threads whereas linen is woven in individual threads, but both fabrics make sure that there is an even number of blocks/threads to a 1-inch square in both directions.

What does "count" mean on fabrics? The count refers to how fine the fabric is. Aida comes in different counts. You are very likely stitching on a 14-count aida if you are choosing aida fabric at all, which basically means that there are 14 squares per inch. Aida has very clearly defined holes for where your needle should come through. One hole on aida equals one square on the cross stitch chart so it's the most beginner-friendly fabric to use if you are new to cross stitching.

Our preferred option for stitching is linen. We usually go for a 28-count Cashel linen from Picture This Plus. Linen is not really more difficult to use than aida but the counting is slightly different. On aida one hole corresponds to one square in the chart, remember? On linen you need to count a bit differently. Linen is much more "undefined" than aida, so what you do is work your cross stitch over two threads of the fabric in each direction. Just "hop" over one hole.

### Floss:

We are working with stranded cotton floss and usually use two strands of floss. Most floss types have 6 strands, so you'll need to separate the strands, gently pulling one strand of floss off and folding it in half to create a 2-strand bit of floss. Thread the two open ends through your needle so that there is a loop on one end of your floss. You will use this to secure the thread without having to make a knot. (See page 3.)

XXXXXXXXXXXXXXXXXXXXXXXXXXXXXXXXXXXXXXXXXXXXXXXXXXXX



**needle with two  
strands of floss**

XXXXXXXXXXXXXXXXXXXXXXXXXXXXXXXXXXXXXXXXXXXXXXXXXXXX

### Cross stitch charts:

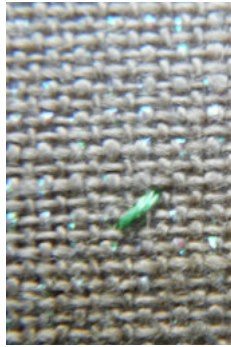
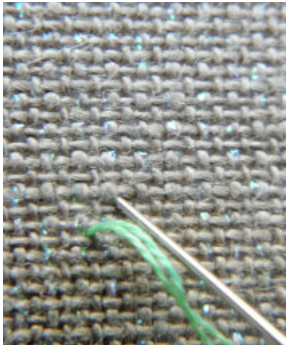
One square in your cross stitch chart represents one finished cross in your actual cross stitch work.

Where to start? If you want to make sure that your design is right in the center of your fabric simply start stitching in the middle of your fabric and work your way outwards.

### Needles:

Tapestry needle in size 24 or 26.

XXXXXXXXXXXXXXXXXXXXXXXXXXXXXXXXXXXXXXXXXXXXXXXXXXXX



**bring needle from  
back of fabric to the  
front at the bottom  
left of your first stitch  
and push it back at  
right top corner**

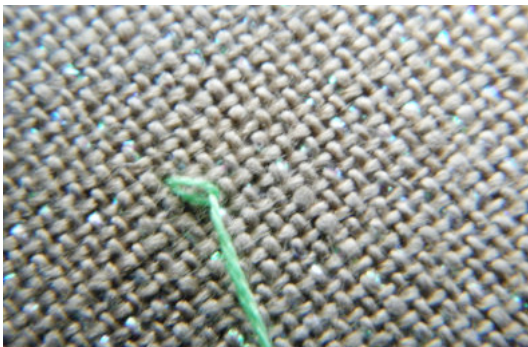
**half a cross done**



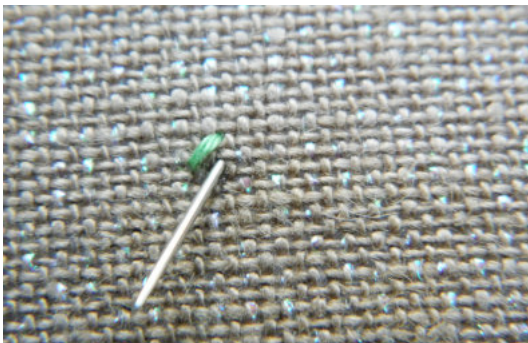
**loop at the back of  
the fabric for  
securing the thread**



**pull needle through  
the loop to secure  
the thread**



**thread secured  
without having to  
make a knot**



**bring needle from  
back to front by  
pushing through  
bottom right hand  
corner, ready for  
the next stitch**

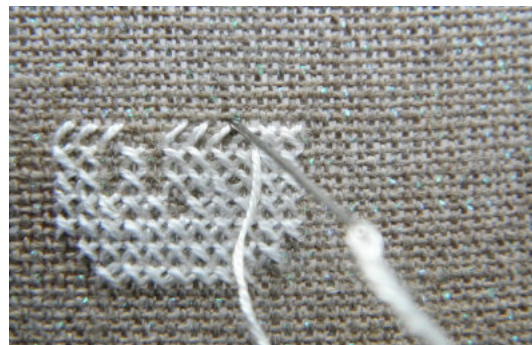
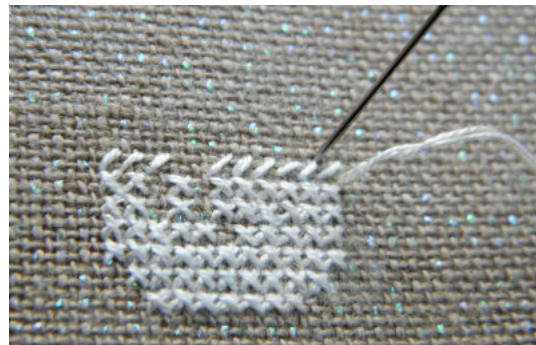
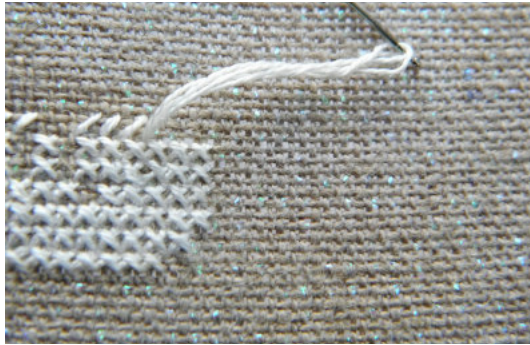
XXXXXXXXXXXXXXXXXXXXXXXXXXXXXXXXXXXXXXXXXXXXXXXXXXXX



## Stitching a row:

When you want to stitch a row you will make a line of half crosses that all point into the same direction. You will be working your way from the left to the right and then back. To complete your row of half crosses simply work back into the opposite direction and let your floss cross all previously made half crosses.

XXXXXXXXXXXXXXXXXXXXXXXXXXXXXXXXXXXXXXXXXXXX



XXXXXXXXXXXXXXXXXXXXXXXXXXXXXXXXXXXXXXXXXXXX



**Hazel's  
Golden  
Rule:**






Make sure all crosses you create cross in the same direction! Bring the needle from back of the fabric to the front in the bottom left, then cross one block of aida/two threads of linen and push the needle through the top right to the wrong side of the fabric. Now that the needle is on the back, bring the needle back to the front by pushing it through at the bottom right hand corner of your block/thread square and back to the wrong side of the fabric through the top left hand corner by crossing the floss from earlier.

# Squirrel Frame

copyright ©2014 susi bellingham & mollie johanson

Count Size: 45 x 55    Finished Size: 3.21 x 3.93 (inch)



 930 (DMC)	 3826 (DMC)	 3852 (DMC)	 310 (DMC)	 353 (DMC)
-----------------------------------------------------------------------------------------------	------------------------------------------------------------------------------------------------	------------------------------------------------------------------------------------------------	-----------------------------------------------------------------------------------------------	-------------------------------------------------------------------------------------------------